

RIB CostX[®] 7.4 Release Notes

Introducing a new **Bulk Print Drawings to Report** feature in CostX to streamline your workflow and save time on large, complex projects. This new feature replaces the need to manually print each drawing, allowing you to easily select and publish multiple 2D drawings and their associated takeoff data into a single PDF document.

Other highlights in this release include significant updates to the **Drawing Register** for better document management, accessing **Segment and Vertex Counts** of measured dimensions, enhanced **Authentication Logs**, improvements to the **Building Selection Dialog** and enhancements to the **Estimate and Bills of Quantities** reports.

Headline Features

The **Bulk Print Drawings to Report** feature lets you compile selected 2D drawings and takeoffs into a single PDF report. This new process saves valuable time and ensures you can produce a precise document tailored to your needs.

- The **Drawing Register** interface now displays two new fields, **Issuer** and **Status**, giving you more ways to categorise and track your drawings. Additionally, the **Drawing Register** dataset in the **Report Writer** now includes fields for **Issuer**, **Status**, and **File Extension** for more comprehensive reporting options.
- **Segment and Vertex Counts** are now available as properties of measured dimensions and can be accessed via the **Expression Editor**. This lets you perform more precise quantity take-offs, such as calculating the number of pipe bends or segments, with the values also visible in the **Dimension Hint**.
- Reporting improvements introduce a **Flatten Lowest Level Output** option to reduce whitespace and a hyperlinked **Contents listing** for quick navigation. Heading maintenance is improved across both, **BOQ** and **Estimate** reports to support capitalisation and prevent items from separating from headers. The **BOQ** report now features a repositioned **Workbook Level 1 MasterData band** and carries forward figures on extended collection pages.
- The **Select Building dialog** now saves your filter settings for future use, presenting you with a concise set of buildings to save you search time when you first open CostX. To provide clear visual feedback about the filters being used, the dialog features colour-coded text (black for default, red for modified/custom).
- Authentication logging now includes the user's full name for more detailed and useful tracking.

Bulk Print Drawings to Report

We are introducing a new feature in CostX to streamline your workflow and improve efficiency when creating reports. The **Bulk Print Drawings to Report** feature addresses a significant bottleneck for users who need to print multiple 2D drawings with takeoff data at once. This update is designed to save you valuable time, particularly on large and complex projects.

Previously, you had to manually configure and print each drawing individually which was time-consuming and became increasingly difficult as projects grew in size. This new feature provides a more efficient solution by enabling you to select and publish multiple 2D drawings and their associated takeoff information into a single PDF document. This change is designed to simplify the process of sharing project data with clients, managers, and consultants.

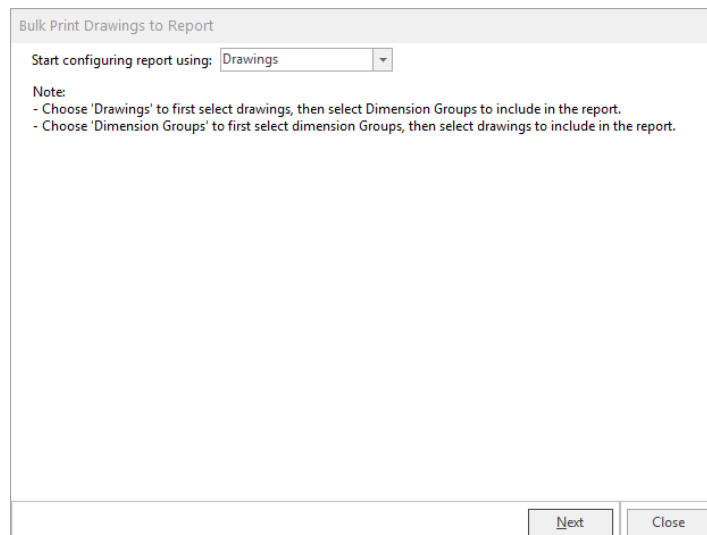
Access the Feature

The new feature is a wizard-style interface that guides you through a four-step process to configure your print job. It provides two distinct workflows to suit your specific needs.

This is available from the **Reports** drop-down menu in the **Drawings** tab on the CostX ribbon. Select **Bulk Print Drawings to Report** to begin.

Step 1: Choose Your Starting Point

After you launch the **Bulk Print Drawings to Report** wizard, this step allows you to decide how you want to build your report. You can either start by selecting **Drawings** or by selecting **Dimension Groups**.



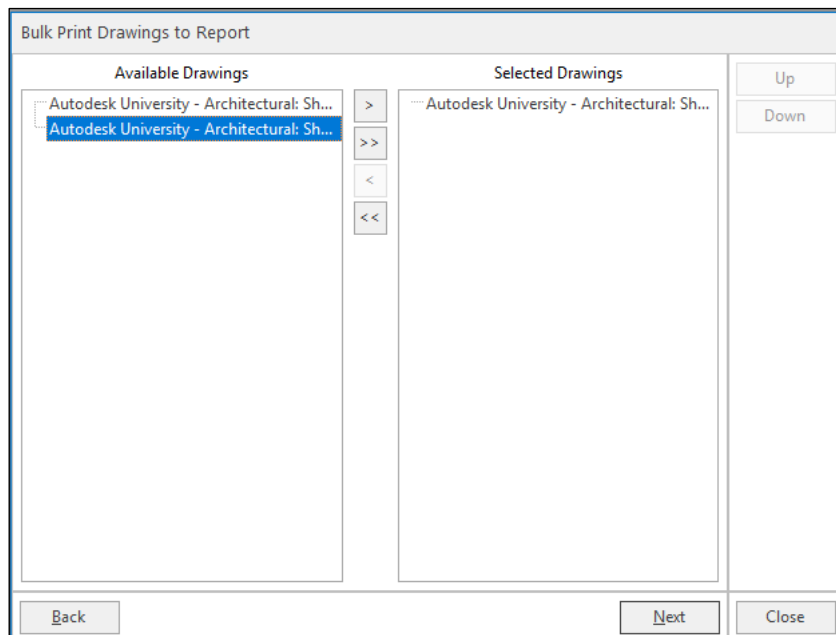
Drawings: The default selection is **Drawings**. Choose this option to display a list of all drawings in your current building. When you proceed to selecting dimension groups in the next step, these will be filtered to only show the dimension groups that exist on the drawings you have selected.

Dimension Groups: Alternatively, select **Dimension Groups** from the dropdown menu if you prefer to choose the dimension groups you need displayed on the report first. Then in the next step, the wizard will filter the drawings to only show those that feature your selected dimension groups.

Once you have made your selection, click **Next** to proceed with selecting the specific drawings and dimension groups for your report.

Step 2: Select From Your Primary Category

The purpose of this step is to select the specific items from your primary category (either **Drawings** or **Dimension Groups**, based on your choice in Step 1) that you want to include in the print job.



1. You'll work with two panels: an **Available** panel on the left, which lists all items, and a **Selected** panel on the right, which displays the items you've chosen for your report.
2. Click individual items or entire folders in the **Available** panel. You can select multiple items using the **CTRL** or **SHIFT** keys.
3. Use the control buttons between the panels to move your selection:
 - Click **>** to include the selected item(s) or folder(s) in the print job (moving them to the **Selected** panel).
 - Click **>>** to include all available items.
4. If required, select items in the **Selected** panel and click **<** to move them back to the **Available** panel. Click **<<** to remove all selected items.
5. If **Drawings** are your primary collection, you can use the **Up** and **Down** buttons to reorder the selected drawings to determine their order in the final report.

6. Click **Next** to proceed to Step 3. The **Next** button is enabled only if you have selected at least one item.

Step 3: Select From Your Secondary Category

Based on your selections in the previous step, this screen will now show a filtered list of items in the secondary category.

If **Drawings** were the primary category: The **Available** panel displays only the dimension groups that are featured on the drawings selected in Step 2. Select which of these dimension groups you want to display on your selected drawings.

If **Dimension Groups** were the primary category: The **Available** panel displays only the drawings that contain the dimension groups selected in Step 2. Select which of these drawings you want to include in your report.

Use the **Back** and **Next** buttons to navigate between steps. If Drawings are being selected, you must select at least one before you can proceed to the next step.

Step 4: Configure and Export Your Report

The final step in the wizard allows you to configure your report settings before publishing. Here, you can define the report's appearance and where it will be saved.

The screenshot shows a dialog box titled "Bulk Print Drawings to Report" with two tabs: "Report Options" (selected) and "Printer Options". A "Publish" button is located in the top right corner. The "Report Options" tab contains the following fields and controls:

- Print Title:** A text box containing "CostX Drawing".
- Project:** A text box containing "Default Project".
- Building:** A text box containing "Segment&Vertex".
- Show:** A section containing three checked checkboxes: "Markups", "Labels", and "Legend".
- Display:** A section containing four dropdown menus, all set to "As Set":
 - Hatching
 - Text
 - Monochrome
 - Line Styles
 - Line Weight

At the bottom of the dialog, there are "Back" and "Close" buttons.

In the **Report Options** tab, CostX automatically populates the **Project** and **Building** fields with the names of your current project and building. The **Print Title** defaults to **CostX Drawing**. Note that all these fields are editable, so you can customise your report headers as required.

Under **Show** options, you can toggle the visibility of three key elements for each drawing in your report.

- **Markups:** You may choose to include any markups added to your drawings.
- **Labels:** Display labels on your drawings.
- **Legend:** Add a legend to your report to display details for each dimension group.

You can also configure five specific **Display** settings: Hatching, Text, Monochrome, Line Styles, and Line Weight for each drawing in your report. Each of these settings features three distinct states to provide more flexibility over the report's appearance.

- **As Set** uses the display setting currently applied to each specific drawing.
- **Enabled** applies the setting to each drawing in the Report.
- **Disabled** ensures the setting is turned off for each drawing in the Report.

Once you have configured your options, click the **Publish** button. CostX will generate a single PDF report containing all your selected drawings and takeoff, formatted according to the settings you've configured. The report captures the drawing window as you see it, so ensure your drawing view is set up as intended for each drawing before publishing. The report will be saved to the specified file directory.

Current Feature Considerations

While the **Bulk Print Drawings to Report** feature offers significant new capabilities, please note the following **limitations in version 7.4:**

- The feature supports printing for the following file formats: DWG, PDF, JPEG/JPG, and PNG.
- Printing of individual **Views** and/or **Working Areas** is not supported.
- Currently, the feature does not support hidden layers; therefore, all drawing Layers will be included and visible in the final printed report.
- Dimension Groups filtered by Zone Category cannot be included in these reports.
- The legend currently supports the display of up to 47 dimension groups; selecting fewer than this will provide improved readability.

Drawing Register Enhancements

Key enhancements to the **Drawing Register** are now available, significantly improving the ability to manage and report on the list of drawings and documents that served as the basis for estimates. These updates introduce new essential fields and expand reporting capabilities, allowing for more comprehensive and risk-mitigating documentation.

We've integrated new fields, **Issuer** and **Status**, across the main **Drawing Register** screens and improved custom reporting by making these fields available, as well as the **Drawing's File Extension**, to the report writer.

Issuer and Status Field

You can now easily record who issued a drawing within the **Drawing Register**. The new **Issuer** field is also available in the custom report writer as part of the **Drawing Register** dataset, allowing you to group or organise your drawing schedules and reports by the sources that provided the document. Recording this information is essential for auditability and referencing drawings later.

The image shows a 'Drawing Properties' dialog box with three tabs: 'Drawing Properties', 'Object Property Defaults', and 'Zones'. The 'Drawing Properties' tab is active. It contains several input fields: 'Name' (Autodesk University - Architectural: 3D View), 'Folder' (dropdown), 'File Name' (C:\Users\108950\Downloads\CostX\CostX...), and 'Properties File Name' (dropdown). Below these is a section titled 'Drawing Register' which includes fields for 'Title', 'Number', 'Revision', 'Issuer', 'Status', and 'Date Received'. At the bottom, there are fields for 'Base UOM' (Millimetres), 'Drawing Multiplier' (1), 'Horizontal Scale' (Custom... with 1.00 input), and 'Vertical Scale' (Custom... with 1.00 input). 'Update' and 'Cancel' buttons are on the right.

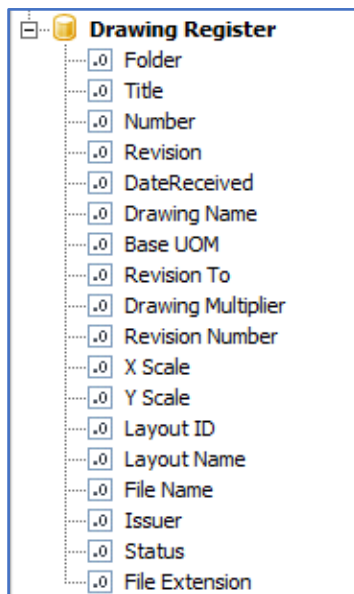
The introduction of the **Status** field allows you to document the current state of a drawing, essential for risk mitigation and accurate document control. You can now enter the current **Status** of a drawing (for example, WIP, 50% Complete, Inactive). This field helps highlight potential risks when incomplete drawings are used for takeoff.

Additionally, this field is now included in the **Drawing Register** dataset for use in custom reports, making it easy to filter out irrelevant drawings (for example, all drawings with a status of **Inactive**) without resorting to workarounds.

To accommodate the newly added **Status** field, the existing **Status** column (v7.3) has been renamed to **Lock State**. This change aligns with the new **Status** field for tracking drawing progress, separating the lock status from the workflow state.

Drawing File Extension in Custom Reports

This feature resolves ambiguity in reports when drawings share the same name but have different file types. So, you no longer have to resort to including the full file path just to show the file type—this new attribute does it for you.



The **File Extension** is now available as a non-editable field in the **Drawing Register** dataset of the custom report writer. This attribute is automatically generated from the drawing's file name. It is not displayed in the main user interface and is only available as an option for reporting purposes.

Dimension Segment and Vertex Counts

This release introduces **Dimension Segment** and **Vertex** counts as additional properties of measured dimensions. For example, you can use these property values to easily calculate the number of junctions required in a multi-segment pipe run.

These properties can be incorporated into your quantity calculations using the formula builder or viewed directly on the **Dimension Hint**.

New Properties

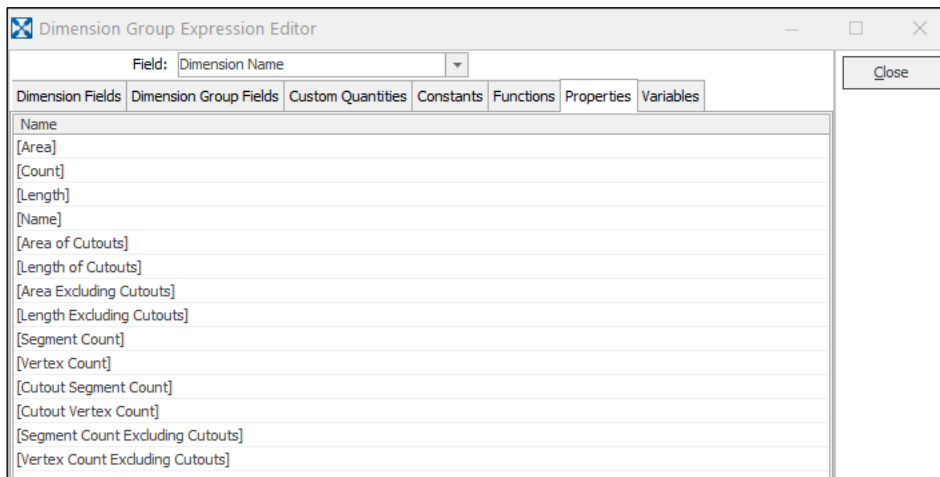
The following properties are now available for measured dimensions:

| Property | Description |
|---------------------------------|--|
| Segment Count | Total number of line segments in the dimension (including cutouts) |
| Vertex Count | Total number of vertices/points in the dimension (including cutouts) |
| Cutout Segment Count | Segment count of cutout areas only |
| Cutout Vertex Count | Vertex count of cutout areas only |
| Segment Count Excluding Cutouts | Segment count for the outside perimeter only |
| Vertex Count Excluding Cutouts | Vertex count for the outside perimeter only |

Expression Editors

The above values can be referenced as **Properties** in the following expression editors for Measured Dimensions:

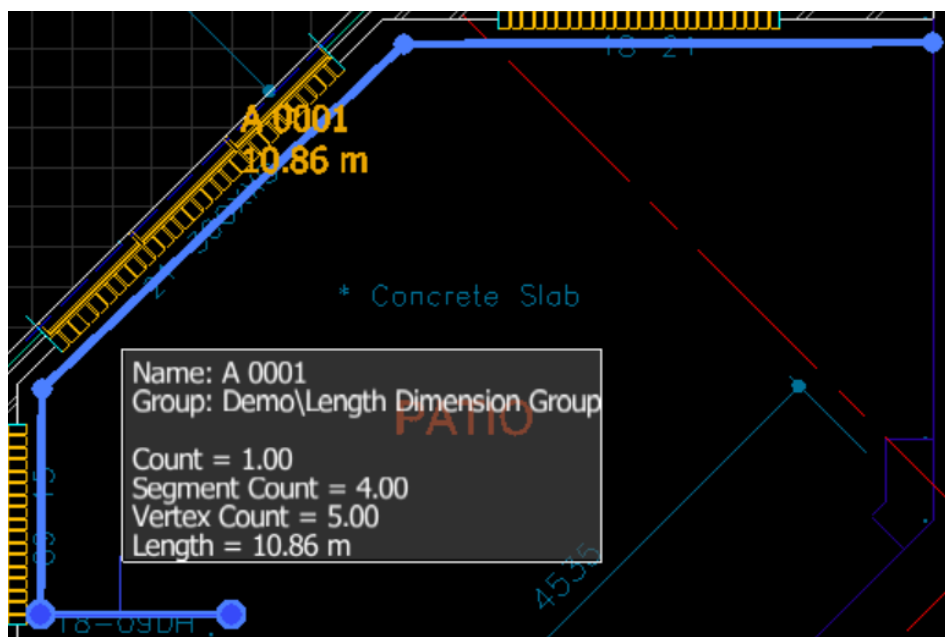
- Dimension Group Expression Editor
- Standard Dimension Group Expression Editor
- Custom Quantity Expression Editor



To reference these values, use their names in square brackets '[]'. For example, you can use the expression **[Vertex Count]*1.1** for a **Custom Quantity** called **Pipe Junctions incl. Wastage**. For detailed information on how to use Properties in an expression, see the **Composing Expressions** topic in the CostX Help.

Dimension Hint Enhancements

When you view the **Dimension Hint** (by hovering over a dimension), you'll now see the **Segment Count** and **Vertex Count** values displayed.



If the dimension includes cutouts, the hint will also show the **Cutout Segment Count**, **Cutout Vertex Count**, **Segment Count Excluding Cutouts**, and **Vertex Count Excluding Cutouts** values below the **Length Including Cutouts** value.

Improved Bills of Quantities and Estimate Reports

Estimate Report

The **Estimate Report** now features a new **Flatten Lowest Level Output** option, which is designed to reduce the whitespace present in the existing version of the report. By checking this option, each section at the lowest level of the workbook is output on the same page as the preceding section. In cases where sections extend beyond the end of a page, they are neatly closed off with a continuation line and continued over onto the following page.

| Project: Appledow University | | Details: Elemental Estimate | | | | | |
|--|--|-----------------------------|------|----------|-----------|--------|------------------|
| Building: Appledow University | | Job No: E2132 | | | | | |
| Code | Description | Quantity | Unit | Rate | Subtotal | Factor | Total |
| 03 FRAME | | | | | | | |
| Concrete Columns | | | | | | | |
| | 450da column | 719 | m | 334.45 | 240,470 | | 240,470 |
| | 750da column | 18 | m | 760.40 | 13,687 | | 13,687 |
| Concrete Beams | | | | | | | |
| | 300x600dp beam | 88 | m | 553.20 | 48,682 | | 48,682 |
| | 400x600dp beam | 1,622 | m | 846.90 | 1,373,510 | | 1,373,510 |
| | 600x900dp beam | 147 | m | 1,229.10 | 180,678 | | 180,678 |
| Structural Steel Columns | | | | | | | |
| | 368UC129 | 3,251 | kg | 6.00 | 19,506 | | 19,506 |
| Steel Roof Frame Members | | | | | | | |
| | 250UB31 | 596 | kg | 6.00 | 3,576 | | 3,576 |
| | 310UB40 | 1,251 | kg | 6.00 | 7,746 | | 7,746 |
| | 114.3x6.8 CHS | 680 | kg | 6.00 | 3,960 | | 3,960 |
| | Allow for cleats, stiffeners, plates, bolts and the like | 382 | kg | 11.00 | 4,202 | | 4,202 |
| | | | | | | | 1,896,016 |
| 04 STRUCTURAL WALLS | | | | | | | |
| Concrete Walls | | | | | | | |
| | 200 thick reinforced in situ 25 MPa concrete wall | 383 | m2 | 610.00 | 233,630 | | 233,630 |
| | | | | | | | 233,630 |
| 05 UPPER FLOORS | | | | | | | |
| Concrete Floors and Roof Slabs | | | | | | | |
| | 150 reinforced in situ concrete roof slab with min. 50mm insulation to falls and/or casfalls | 1,566 | m2 | 320.00 | 501,120 | | 501,120 |
| | 100 reinforced in situ concrete roof slab on perimeter g.v. steel formwork | 72 | m2 | 159.50 | 11,484 | | 11,484 |
| Proprietary Type Floors | | | | | | | |
| | 200 Dycore PC unit with 90 topping | 3,100 | m2 | 220.00 | 682,000 | | 682,000 |
| | | | | | | | 1,194,604 |
| 06 ROOF | | | | | | | |
| Roof Coverings | | | | | | | |
| | Selected waterproofing membrane on plywood substrate | 1,566 | m2 | 310.00 | 485,460 | | 485,460 |
| Roof Supports | | | | | | | |
| | Timber framed roof with rafters, bracing, fibreglass insulation and profiled metal covering | 55 | m2 | 201.67 | 11,092 | | 11,092 |
| Eaves Facing & Soffits | | | | | | | |
| | | | | | | | (cont'd) |
| 5/12/2025 08:21 am RIB Pacific Page 10 of 20 | | | | | | | |

| Project: Appledow University | | Details: Elemental Estimate | | | | | |
|--|---|-----------------------------|------|----------|-----------|--------|-----------------|
| Building: Appledow University | | Job No: E2132 | | | | | |
| Code | Description | Quantity | Unit | Rate | Subtotal | Factor | Total |
| 06 ROOF | | | | | | | |
| | Fascia & barge board, paint finish | 22 | m | 29.00 | 638 | | 638 |
| Secret or Parapet Gutters | | | | | | | |
| | Internal gutter | 8 | m | 169.56 | 1,356 | | 1,356 |
| Downpipes | | | | | | | |
| | Allow for colour steel downpipe | 98 | m | 60.00 | 5,780 | | 5,780 |
| | Allow RWH | 1 | item | 2,000.00 | 2,000 | | 2,000 |
| | Allow for roof penetrations | 1 | item | 5,000.00 | 5,000 | | 5,000 |
| Rooflights | | | | | | | |
| | Glazed canopy | 79 | m2 | 1,500.00 | 118,500 | | 118,500 |
| | | | | | | | 623,806 |
| 07 EXTERIOR WALLS AND EXTERIOR FINISH | | | | | | | |
| Concrete Walls | | | | | | | |
| | 225 thick reinforced 28MPa in situ concrete wall | 64 | m2 | 635.00 | 40,640 | | 40,640 |
| Concrete Masonry Walls | | | | | | | |
| | 200 series concrete masonry block wall with framing and acrylic faced insulation | 748 | m2 | 300.00 | 224,400 | | 224,400 |
| Concrete Masonry Parapet Walls | | | | | | | |
| | 200 series concrete masonry block wall with framing and acrylic faced insulation | 170 | m2 | 300.00 | 51,000 | | 51,000 |
| Applied Finishes | | | | | | | |
| | Paint finish to concrete surface | 64 | m2 | 15.00 | 960 | | 960 |
| | | | | | | | 317,000 |
| 08 WINDOWS AND EXTERIOR DOORS | | | | | | | |
| Aluminium, Steel and Timber Windows | | | | | | | |
| | Aluminium fixed windows, 915 x 1220mm incl. frames, cills, glazing, sealant, etc. | 27 | m2 | 500.00 | 13,500 | | 13,500 |
| Curtain Walling | | | | | | | |
| | Aluminium glazed wall, general, double glazed | 2,741 | m2 | 1,100.00 | 3,015,100 | | 3,015,100 |
| | Extra value for solid spandrel panels | 369 | m2 | 250.00 | 92,250 | | 92,250 |
| | Aluminium glazed double door to curtain walling | 6 | no | 2,450.00 | 14,700 | | 14,700 |
| | Aluminium glazed single door to curtain walling | 11 | no | 1,550.00 | 17,050 | | 17,050 |
| Isolated Doors | | | | | | | |
| | Single flush timber doorset, 915 x 2134mm including hardware and paint finish | 2 | no | 1,528.77 | 3,058 | | 3,058 |
| | | | | | | | (cont'd) |
| 5/12/2025 08:21 am RIB Pacific Page 11 of 20 | | | | | | | |

Improvements have also been made to the maintenance of **Headings** in the **Estimate Report**, with the addition of capital letters as a recognised style of header formatting. This update also prevents items from being divorced from their headings; for example, if a heading and its corresponding item would otherwise be split over two separate pages, they are now kept together.

| Project: Applewood University | | Details: Elemental Estimate | | | | |
|---------------------------------------|--|-----------------------------|------|----------|------------------|-----------|
| Building: Applewood University | | Job No: E2132 | | | | |
| Code | Description | Quantity | Unit | Rate | Subtotal | Total |
| 03 FRAME | | | | | | |
| Concrete Columns | | | | | | |
| | 450dia column | 719 | m | 334.45 | 240,470 | 240,470 |
| | 750dia column | 18 | m | 780.40 | 13,867 | 13,867 |
| Concrete Beams | | | | | | |
| | 300x600dp beam | 88 | m | 553.20 | 48,682 | 48,682 |
| | 400x600dp beam | 1,622 | m | 848.80 | 1,373,510 | 1,373,510 |
| | 600x900dp beam | 147 | m | 1,229.10 | 180,678 | 180,678 |
| Structural Steel Columns | | | | | | |
| | 388UC129 | 3,251 | kg | 6.00 | 19,506 | 19,506 |
| Steel Roof Frame Members | | | | | | |
| | 250UB31 | 596 | kg | 6.00 | 3,576 | 3,576 |
| | 310UB40 | 1,291 | kg | 6.00 | 7,746 | 7,746 |
| | 114.3x8.8 CHS | 660 | kg | 6.00 | 3,960 | 3,960 |
| | Allow for cleats, stiffeners, plates, bolts and the like | 382 | kg | 11.00 | 4,202 | 4,202 |
| | | | | | 1,896,016 | |
| 04 STRUCTURAL WALLS | | | | | | |
| Concrete Walls | | | | | | |
| | 200 thick reinforced in situ 25 MPa concrete wall | 383 | m2 | 610.00 | 233,630 | 233,630 |
| | | | | | 233,630 | |
| 05 UPPER FLOORS | | | | | | |
| Concrete Floors and Roof Slabs | | | | | | |
| | 150 reinforced in situ concrete roof slab with min. 50mm insulation to falls and/or eavesfalls | 1,568 | m2 | 320.00 | 501,120 | 501,120 |
| | 100 reinforced in situ concrete roof slab on permanent galv. steel formwork | 72 | m2 | 159.50 | 11,484 | 11,484 |
| Proprietary Type Floors | | | | | | |
| | 200 Dycore PC unit with 90 topping | 3,100 | m2 | 220.00 | 682,000 | 682,000 |
| | | | | | 1,194,604 | |
| 06 ROOF | | | | | | |
| Roof Coverings | | | | | | |
| | Selected waterproofing membrane on prepared substrate | 1,568 | m2 | 310.00 | 485,480 | 485,480 |
| Roof Supports | | | | | | |
| | Timber framed roof with rafters, bracing, fireglass insulation and profiled metal covering | 55 | m2 | 201.67 | 11,092 | 11,092 |

| Project: Applewood University | | Details: Elemental Estimate | | | | |
|--|--|-----------------------------|------|----------|----------------|-----------|
| Building: Applewood University | | Job No: E2132 | | | | |
| Code | Description | Quantity | Unit | Rate | Subtotal | Total |
| 06 ROOF | | | | | | |
| Eaves Facing & Soffits | | | | | | |
| | Fascia & barge board, paint finish | 22 | m | 29.00 | 638 | 638 |
| Secret or Parapet Gutters | | | | | | |
| | Internal gutter | 8 | m | 169.56 | 1,356 | 1,356 |
| Downpipes | | | | | | |
| | Allow for colour steel downpipe | 96 | m | 60.00 | 5,760 | 5,760 |
| | Allow RWH | 1 | item | 2,000.00 | 2,000 | 2,000 |
| | Allow for roof penetrations | 1 | item | 5,000.00 | 5,000 | 5,000 |
| Rooflights | | | | | | |
| | Glazed canopy | 79 | m2 | 1,500.00 | 118,500 | 118,500 |
| | | | | | 629,805 | |
| 07 EXTERIOR WALLS AND EXTERIOR FINISH | | | | | | |
| Concrete Walls | | | | | | |
| | 225 thick reinforced 25MPa in situ concrete wall | 64 | m2 | 635.00 | 40,640 | 40,640 |
| Concrete Masonry Walls | | | | | | |
| | 200 series concrete masonry block wall with framing and acrylic faced insulation | 748 | m2 | 300.00 | 224,400 | 224,400 |
| Concrete Masonry Parapet Walls | | | | | | |
| | 200 series concrete masonry block wall with framing and acrylic faced insulation | 170 | m2 | 300.00 | 51,000 | 51,000 |
| Applied Finishes | | | | | | |
| | Paint finish to concrete surface | 64 | m2 | 15.00 | 960 | 960 |
| | | | | | 317,000 | |
| 08 WINDOWS AND EXTERIOR DOORS | | | | | | |
| Aluminium, Steel and Timber Windows | | | | | | |
| | Aluminium fixed windows, 915 x 1220mm incl. frames, glazing, sealant, etc. | 27 | m2 | 500.00 | 13,500 | 13,500 |
| Curtain Walling | | | | | | |
| | Aluminium glazed wall, general, double glazed | 2,741 | m2 | 1,100.00 | 3,015,100 | 3,015,100 |
| | Exc for value for solid spandrel panels | 366 | m2 | 250.00 | 92,250 | 92,250 |
| | Aluminium glazed double door to curtain walling | 6 | no | 2,450.00 | 14,700 | 14,700 |
| | Aluminium glazed single door to curtain walling | 11 | no | 1,550.00 | 17,050 | 17,050 |

Additionally, a new **Contents listing** has been added to the report. This feature automatically captures the page numbering of each workbook level 1 section and provides a hyperlink, allowing you to jump straight to that specific section in the report directly from the contents listing.

BOQ Report

The maintenance of **Headings** has also been improved in the BOQ report. The report can now handle up to three levels of in-line headings, and capital letters are now recognised as a component of a heading's style.

In addition, the **Workbook Level 1 MasterData band** has been repositioned at the start of the page, with various alterations made to support this layout. This adjustment means that, if required, a memo can be introduced into the Header band to output the Workbook Level 1 Description text, such as the bill description or trade, at the top of each page.

Finally, improvements have been made to the way that collection pages are extended over multiple pages of output. These pages now include a carried forward figure at the base of each continuation page to ensure better clarity throughout the report.



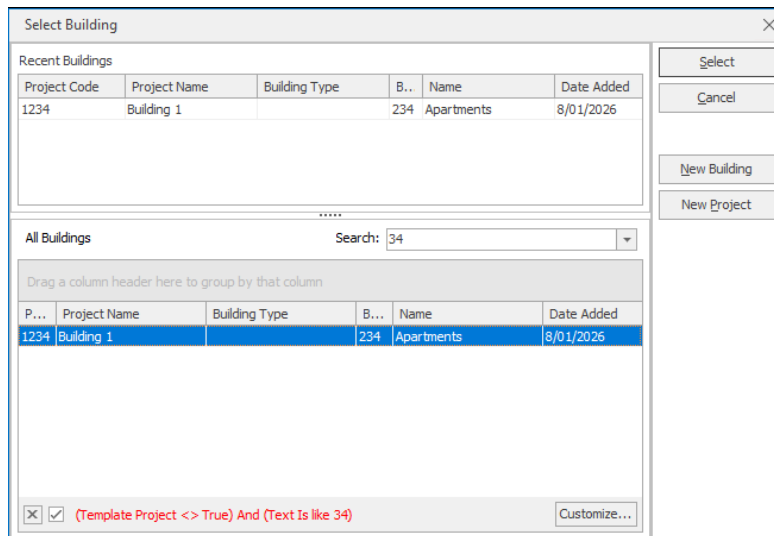
| Item | Description | Quantity | Unit | Rate | Amount |
|------|---------------------------|----------|------|------|-----------|
| 4 | STRUCTURAL STEEL (cont'd) | | | | |
| | COLLECTION | | | | |
| | Page 4/1 | | | | 69,334 |
| | Page 4/2 | | | | 48,885 |
| | Page 4/3 | | | | 66,620 |
| | Page 4/4 | | | | 52,356 |
| | Page 4/5 | | | | 13,510 |
| | Page 4/6 | | | | 17,510 |
| | Page 4/7 | | | | 12,460 |
| | Page 4/8 | | | | 22,356 |
| | Page 4/9 | | | | 47,385 |
| | Page 4/10 | | | | 26,242 |
| | Page 4/11 | | | | 111,660 |
| | Page 4/12 | | | | 84,474 |
| | Page 4/13 | | | | 37,145 |
| | Page 4/14 | | | | 66,420 |
| | Page 4/15 | | | | 32,736 |
| | Page 4/16 | | | | 14,420 |
| | Page 4/17 | | | | 15,620 |
| | Page 4/18 | | | | 12,460 |
| | Page 4/19 | | | | 12,656 |
| | Page 4/20 | | | | 39,485 |
| | Page 4/21 | | | | 23,242 |
| | Page 4/22 | | | | 30,160 |
| | Page 4/23 | | | | 69,474 |
| | Page 4/24 | | | | 37,145 |
| | Carried Forward: | | | | 965,855 |
| | | | | | Page 4/35 |



| Item | Description | Quantity | Unit | Rate | Amount |
|------|---------------------------|----------|------|------|-----------|
| 4 | STRUCTURAL STEEL (cont'd) | | | | |
| | COLLECTION | | | | |
| | Page 4/25 | | | | 68,420 |
| | Page 4/26 | | | | 32,736 |
| | Page 4/27 | | | | 14,420 |
| | Page 4/28 | | | | 15,620 |
| | Page 4/29 | | | | 12,460 |
| | Page 4/30 | | | | 12,656 |
| | Page 4/31 | | | | 39,485 |
| | Page 4/32 | | | | 23,242 |
| | Page 4/33 | | | | 30,160 |
| | Page 4/34 | | | | 0 |
| | To Final Summary: | | | | 1,215,054 |
| | | | | | Page 4/36 |

Improved Building Selection Dialog and Filtering Updates

The **Select Building** dialog now automatically saves your filter settings for future use, with new colour-coded text to provide clear visual feedback on whether you are using default or custom filters.



The filter expression displayed in the selection dialog uses the following colours to indicate their state:

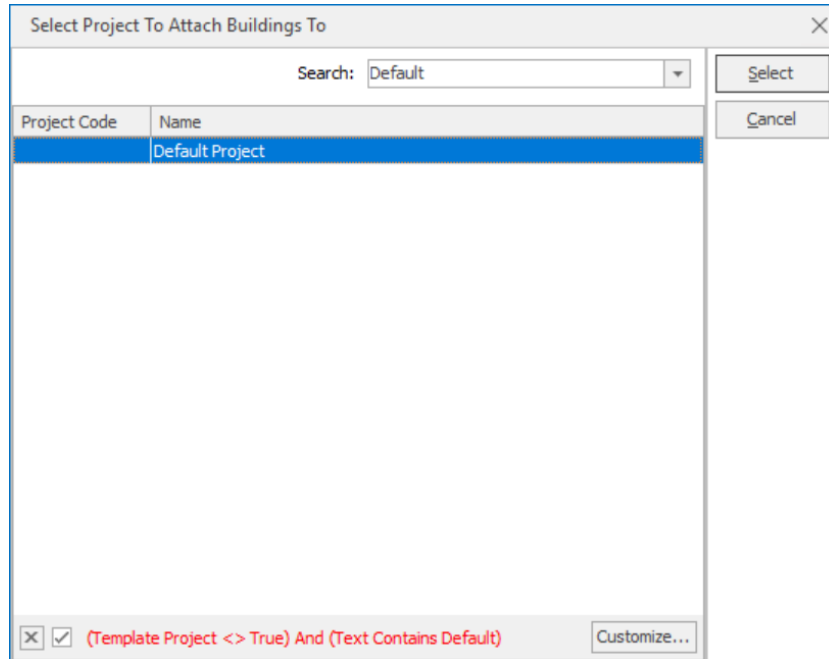
- Black text: Indicates the currently displayed filter is the default.
- Red text: Indicates the filter is custom or temporary. This means:
 - A custom filter you previously saved is active.
 - The **Quick Filter** (search bar) is currently in use.
 - You are actively editing the filter expression.

Using the **Quick Filter** (search bar) overrides any existing filter to apply your search term. When you close the dialog using **Select**, your search term is cleared from the saved settings, and the system will reset to the default filter.

If you've created a custom filter, clicking **Select** will save any changes you've made to the filter expression for future use. Conversely, if you want to exit without applying new settings, click **Cancel** - this will close the dialog and discard all unsaved changes, retaining your last saved filter or the default setting.

Improved Project Selection for Building Imports

Introducing an update to streamline the building import process. Previously, to select the target project you were required to scroll through a potentially long list of options. This new feature provides an immediate, user-friendly search capability within the **Select Project to Attach Buildings To** modal.



You can now efficiently locate a project when importing a building into it.

- A new search bar is now available above the existing project list within the **Select Project to Attach Buildings To** modal.
- The list of projects is progressively filtered as you type, narrowing the results instantly.
- Text search runs across all columns (both **Project Code** and **Name**), providing comprehensive filtering.

Authentication Logging Improvements

The **Authentication Logging** now includes more detailed and useful information about user actions for better tracking and auditing purposes.

- Authentication logs now include the user's **Full Name**, providing a log of the full name of the user performing the action.
- The Excel template for auditing your authentication data, **Authentication Audit Log Statistical Summary.xlsm**, has been improved to use the new full name data. A new reporting option, **CostXLogWithUserFullName**, is now available in the template. Using this new option displays the user's **Full Name** instead of their **Username** in the first column of the generated report.
- To comply with Excel's worksheet naming limits, the product name in the report tabs is now automatically truncated to a maximum of 31 characters.